



North Road, HU19 2AY



£145,000



Wigwam Homes are delighted to offer this fantastic three bedroom mid terrace family home to the market. Boasting two large reception areas, a spacious kitchen, three bedrooms, and a family bathroom. With a great size rear garden, and a front garden with decorative gravel and paving, this makes a perfect family home. Situated in the popular sea-side resort of Withernsea close to local shops and amenities. It is within the catchment area for the highly regarded local primary and secondary schools both of which were rated as good in the last OFSTED report. The beach is mere minutes away.

Property HIGHLIGHTS

Three great size bedrooms

Two spacious reception rooms

Beautiful front and rear gardens

Amazing size kitchen

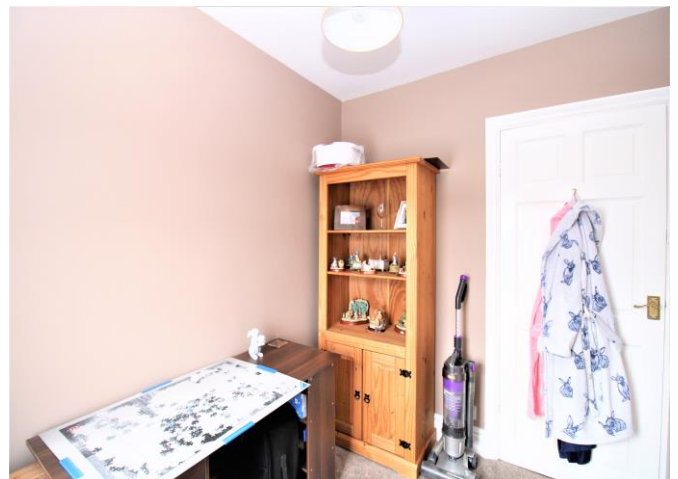
Fantastic seaside location

613 Anlaby Road, Hull, HU3 6SU

01482 50 51 52

hulloffice@wigwamhomes.co.uk

f i in wigwamhomes.co.uk



613 Anlaby Road, Hull, HU3 6SU

01482 50 51 52

hulloffice@wigwamhomes.co.uk

f i in wigwamhomes.co.uk



613 Anlaby Road, Hull, HU3 6SU

01482 50 51 52

hulloffice@wigwamhomes.co.uk

f i in wigwamhomes.co.uk



613 Anlaby Road, Hull, HU3 6SU

01482 50 51 52

hulloffice@wigwamhomes.co.uk

wigwamhomes.co.uk



WIGWAM
HOMES



Property DETAILS

Lounge,

A brilliant size lounge area with carpet fitted throughout. With a large bay window with shelf providing a view of the front garden. Also benefiting from a television point, radiator, and wall outlets.

Dining Room,

A great size dining room with plenty of room for a dining set and chairs. With carpet fitted throughout, this room benefits from a radiator, double doors to the lounge, wall outlets, and large windows overlooking the rear garden.

Kitchen,

A fantastic size kitchen with tiled floor and partially tiled walls. With a wide range of base, wall and drawer units, sink, extractor, space and plumbing for a washing machine, oven point, and windows to the rear and side of the property.

Bedroom One,

Brilliant size double bedroom with carpet fitted throughout. With a bay window with decorative seating, television point, radiator, integrated wardrobes, and wall outlets.

Bedroom Two,

Another spacious double bedroom with carpet fitted throughout. With integrated wardrobes, television point, wall outlets, radiator, and large windows to the rear.

Bedroom Three,

With carpet fitted throughout, radiator, wall outlets, and large windows to the front.

Bathroom,

Stylish family bathroom with tiled walls. Comprising a toilet, bath with shower unit, shower screen, washbasin, radiator, and window to the rear.

Rear,

An extensive rear garden with lawned areas and decorative gravel. Towards the property is a gravelled patio area with lots of room for a patio set. At the rear is a hard standing section with access to the rear of the property through the gate. With brick wall and wooden fence surrounding.

Front,

A beautifully presented front garden with paved pathway to the front door. With decorative gravel, flower garden, and stone wall surround.

Free In-Person Property Valuations,

Do you have a property you want to sell? We at Wigwam Homes would be delighted to provide you with a FREE, NO-OBLIGATION in-person appraisal of your property. Simply arrange a time with us for a visit and we will carry out an assessment of the property's market price and quote our other services. Submit a valuation request on our website, or call us today to speak to one of our friendly and experienced valuers!

Important Information,

EPC: New EPC instructed Council Tax: A Viewings: Strictly by appointment only made with the sole agent Wigwam Homes.



Registered Address: 613 Anlaby Road, Hull, HU3 6SU

Company number: 08768041

Properties for Sale by Region | Properties to Let by Region | Privacy Policy